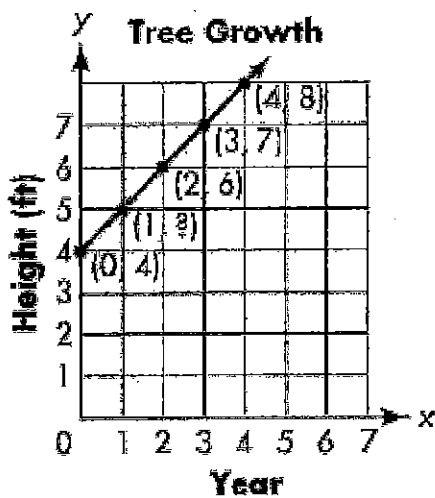


Name: Key

Rotation: 1 2 3

Topic 14, 15, and 16 Practice Test

1. Each year, Ginny recorded the height of a tree growing in her front yard. The graph below shows her data.



Part A

What was the height of the tree after the first year?

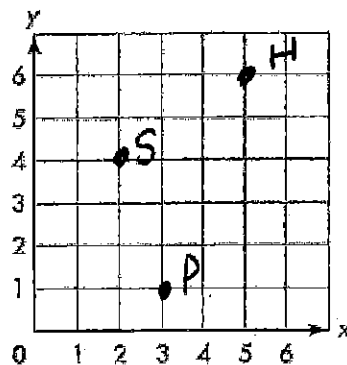
5 feet

Part B

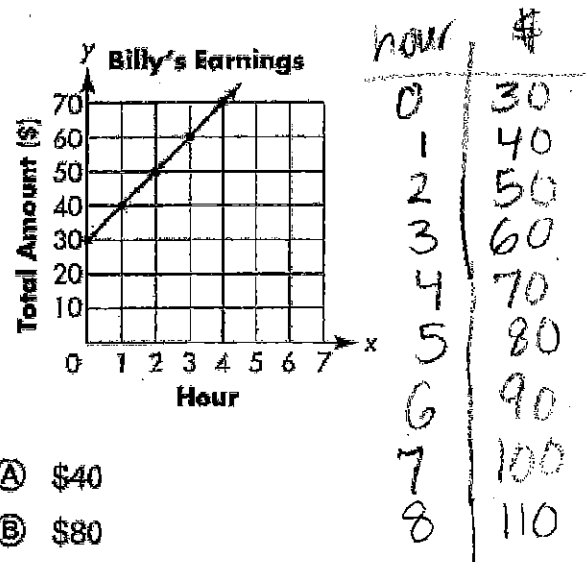
What does the point (3, 7) represent on the graph?

In 3 years, the tree is 7 feet.

2. Varsha draws a map of her neighborhood on a coordinate plane. Her map shows the park at $P(3, 1)$, her house at $H(5, 6)$, and the soccer field at $S(2, 4)$. Graph and label each location below.



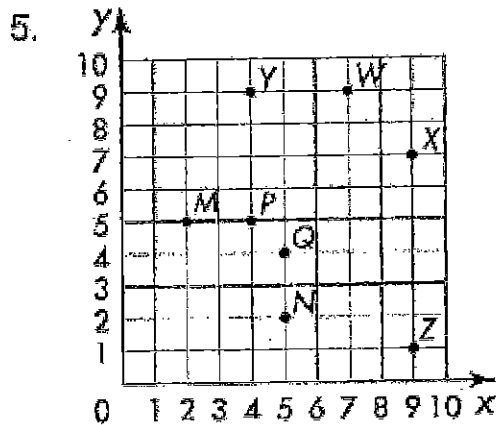
3. Yesterday Billy earned \$30 trimming hedges for Mrs. Gant. Today he will earn \$10 an hour for weeding her garden. If he weeds her garden for 8 hours, how much in all will he earn working for Mrs. Gant?



- (A) \$40
 (B) \$80
 (C) \$110
 (D) \$120

4. How is graphing $(0, 12)$ different from graphing $(12, 0)$?

$(0, 12)$ is plotted on the y-axis.
 $(12, 0)$ is plotted on the x-axis



Which is the ordered pair for Point Y?

- (A) $(4, 5)$
- (B) $(4, 9)$
- (C) $(7, 9)$
- (D) $(9, 4)$

6. There are 16 pawns and 2 kings in each chess set.

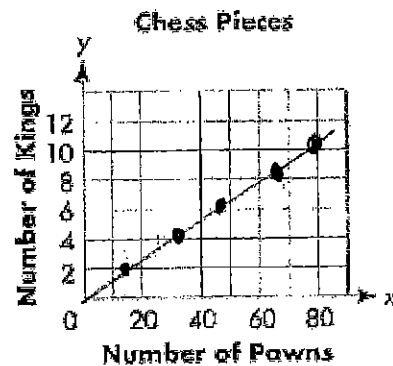
Part A:

Complete the table to show how many pawns and kings in all are in different numbers of chess sets. Use the rules "add 16" and "add 2".

Sets	Pawns	Kings
1	16	2
2	32	4
3	48	6
4	64	8
5	80	10

Part B

Use the total number of pawns and kings to form ordered pairs. Graph the ordered pairs below.



Part C

What would the ordered pair $(96, 12)$ represent?

In 6 sets, there are 96 pawns and 10 kings

7. Liz and Fareed each start a new savings account. Liz starts her account with \$75. Fareed starts his account with \$100. Each month, both save another \$50.

Part A

Complete the table to show the total amount each has saved after each month. Use the rule "add 50".

Month	Liz	Fareed
Start	\$75	\$100
1	125	150
2	175	200
3	225	250
4	275	300

Part B

Choose all the ordered pairs that represent amounts Liz and Fareed have each saved.

- (50, 75)
- (75, 100)
- (125, 150)
- (150, 200)
- (275, 300)

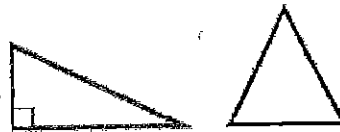
Part C

Describe the relationship between the amount each person has saved after each month.

Fareed always has saved \$25 more than Liz.

- 8.

Harry drew the triangles shown. Which of the following correctly describes the triangles?



- (A) Both triangles have a right angle.
- (B) Only one triangle has an acute angle.
- (C) Both triangles have at least two obtuse angles.
- (D) Both triangles have at least two acute angles.

- 9.

A right triangle has an angle whose measure is 35° . What is the measure of the third angle in the triangle?

- (A) 35°
- (B) 55°
- (C) 72.5°
- (D) 145°

$$\begin{array}{r}
 90 \\
 + 35 \\
 \hline
 125
 \end{array}$$

$$\begin{array}{r}
 180 \\
 - 125 \\
 \hline
 55
 \end{array}$$

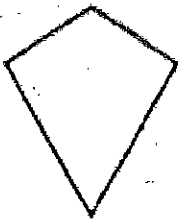
10.

A sail on a sailboat is a triangle with two sides perpendicular, and each side is a different length. Which two terms describe the triangular sail?

- (A) Isosceles, right
- (B) Isosceles, acute
- (C) Scalene, right
- (D) Scalene, obtuse

11.

Anwar says that the shape below is a parallelogram. Is he correct? Explain.



no, it is a
kite, no sides
parallel

12.

Identify the figure below using as many names as possible.



parallelogram
quadrilateral
polygen