

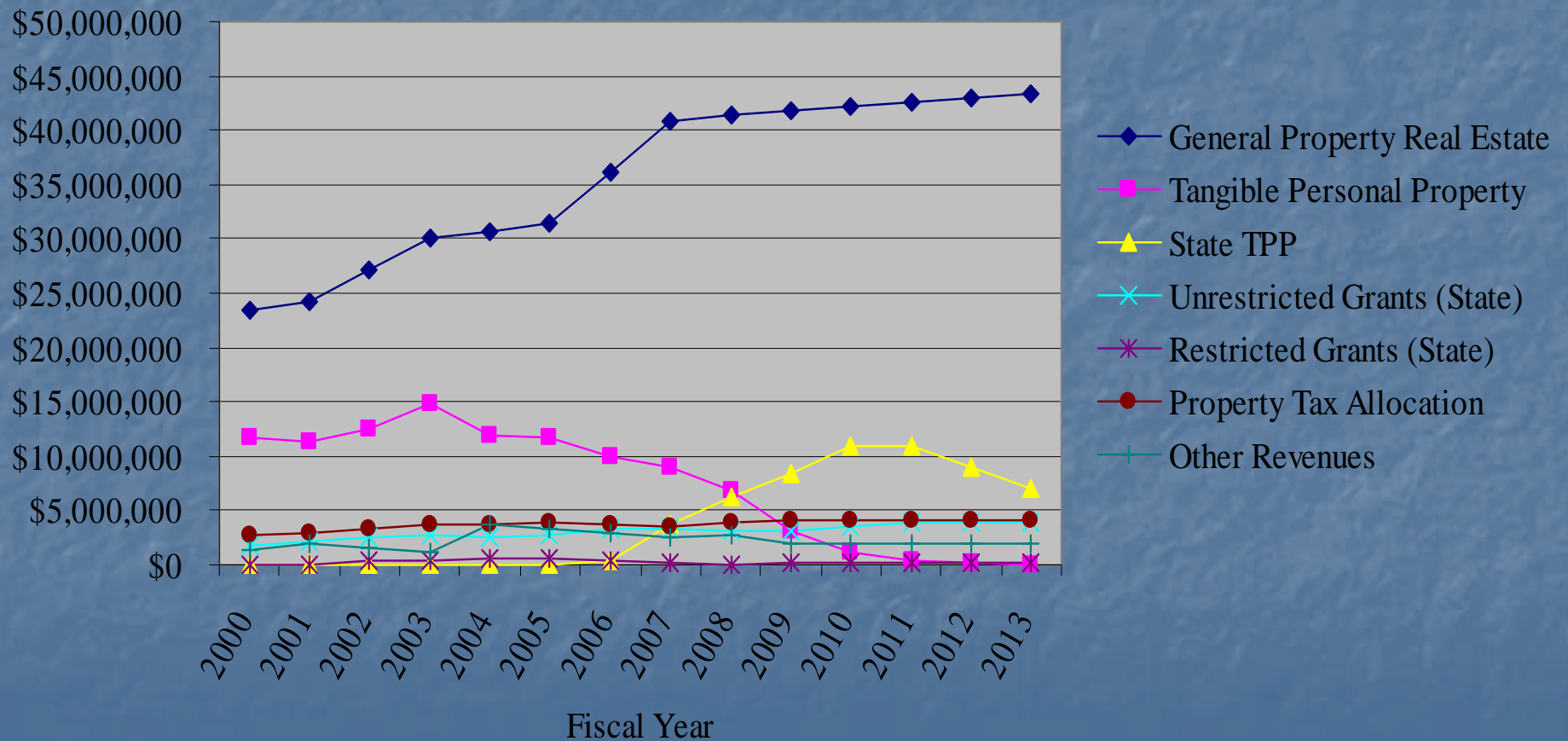
5 Things You Should Know About the Solon Schools

Joe Regano, Superintendent
Tim Pickana, Treasurer

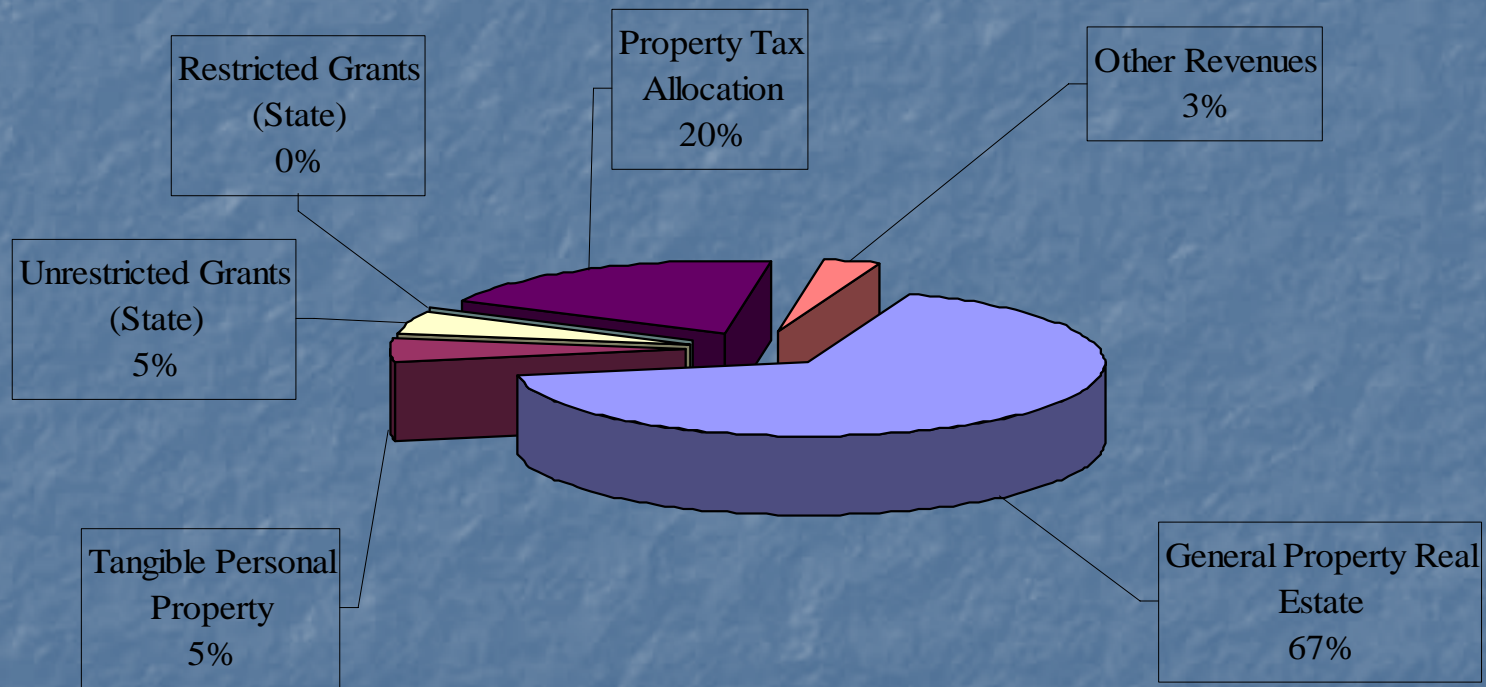
#1

Revenue Loss:
A Financial
Review

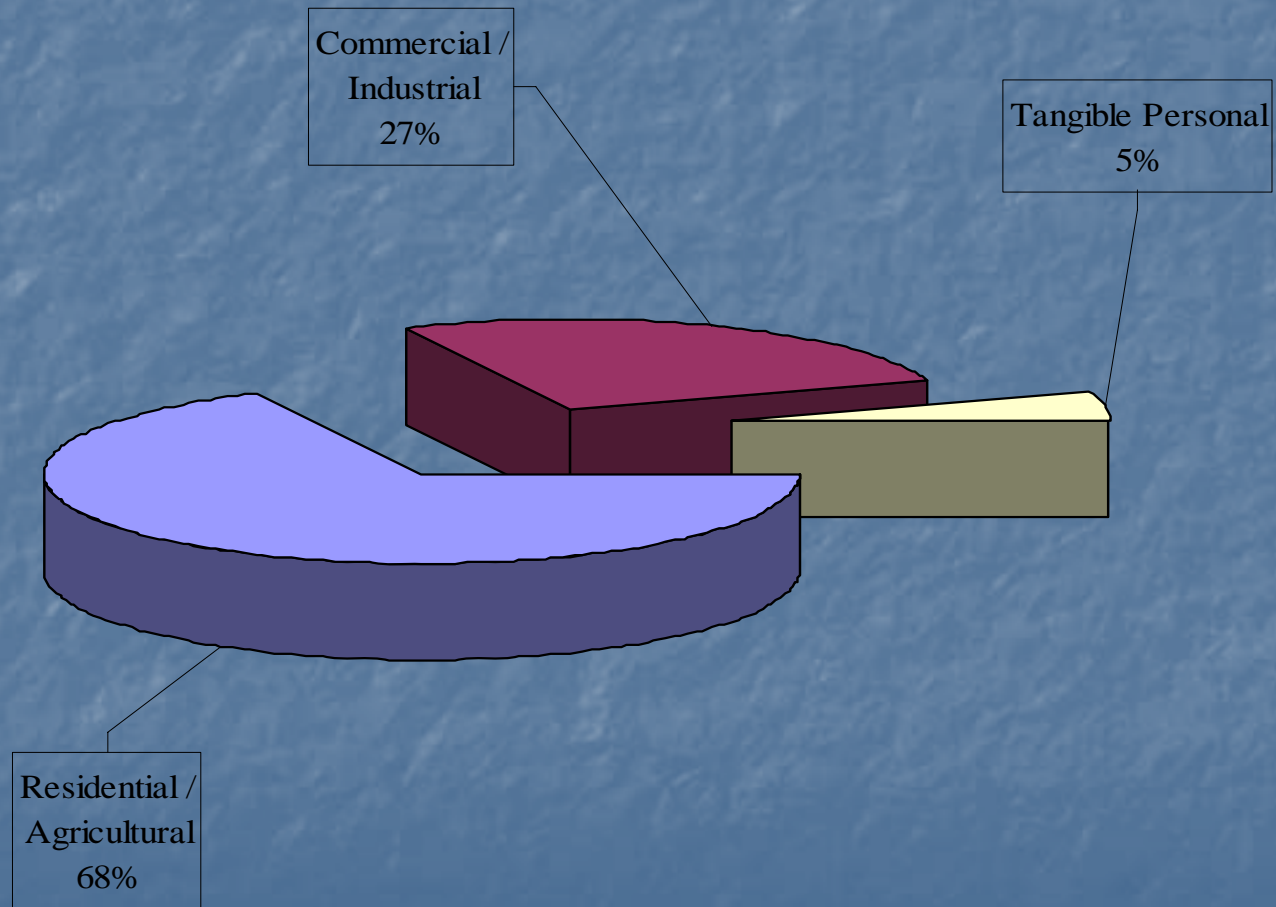
Revenue Categories (History and Projected)



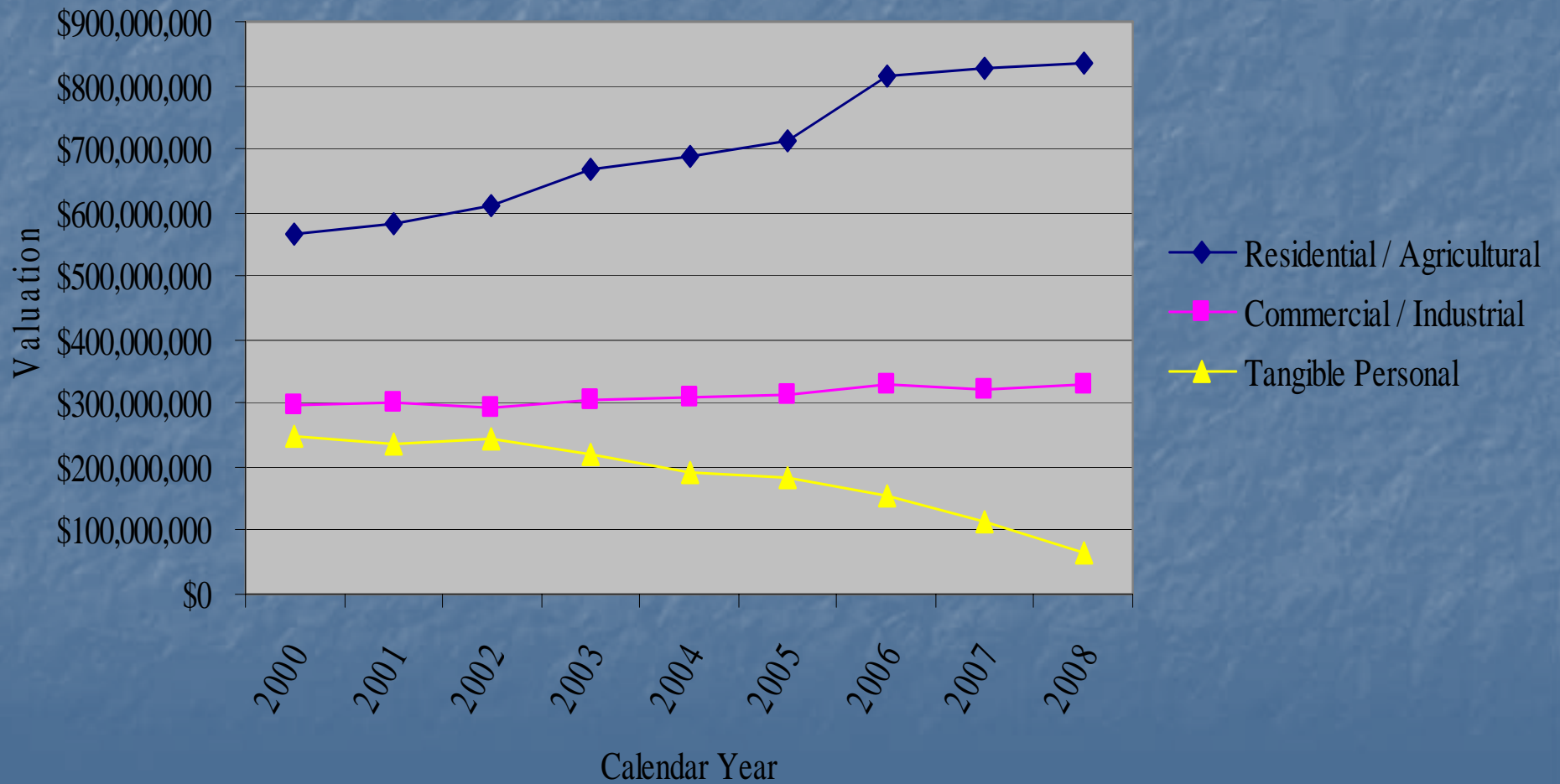
Source of Revenue



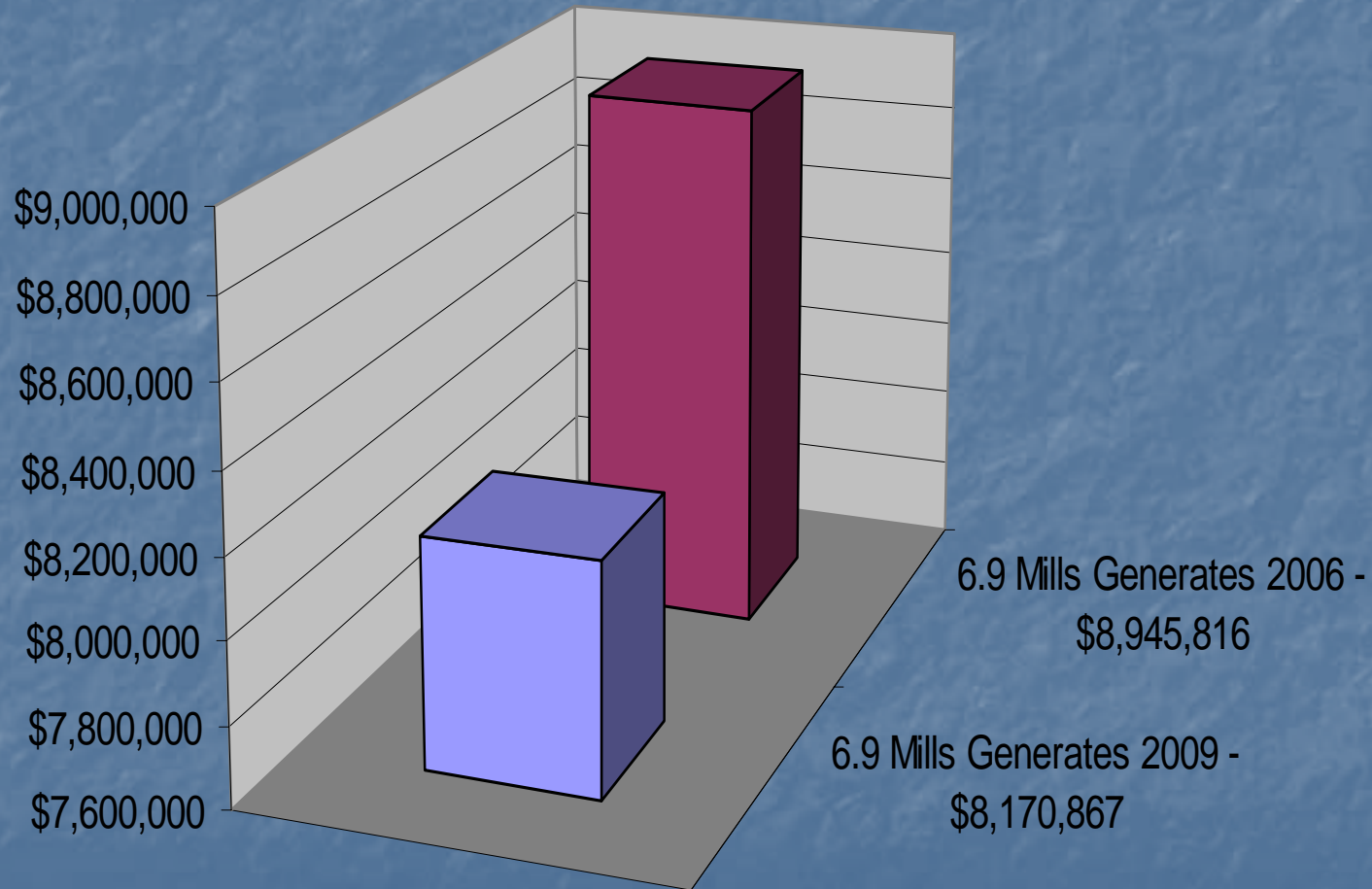
Valuation Breakdown By Property Classification



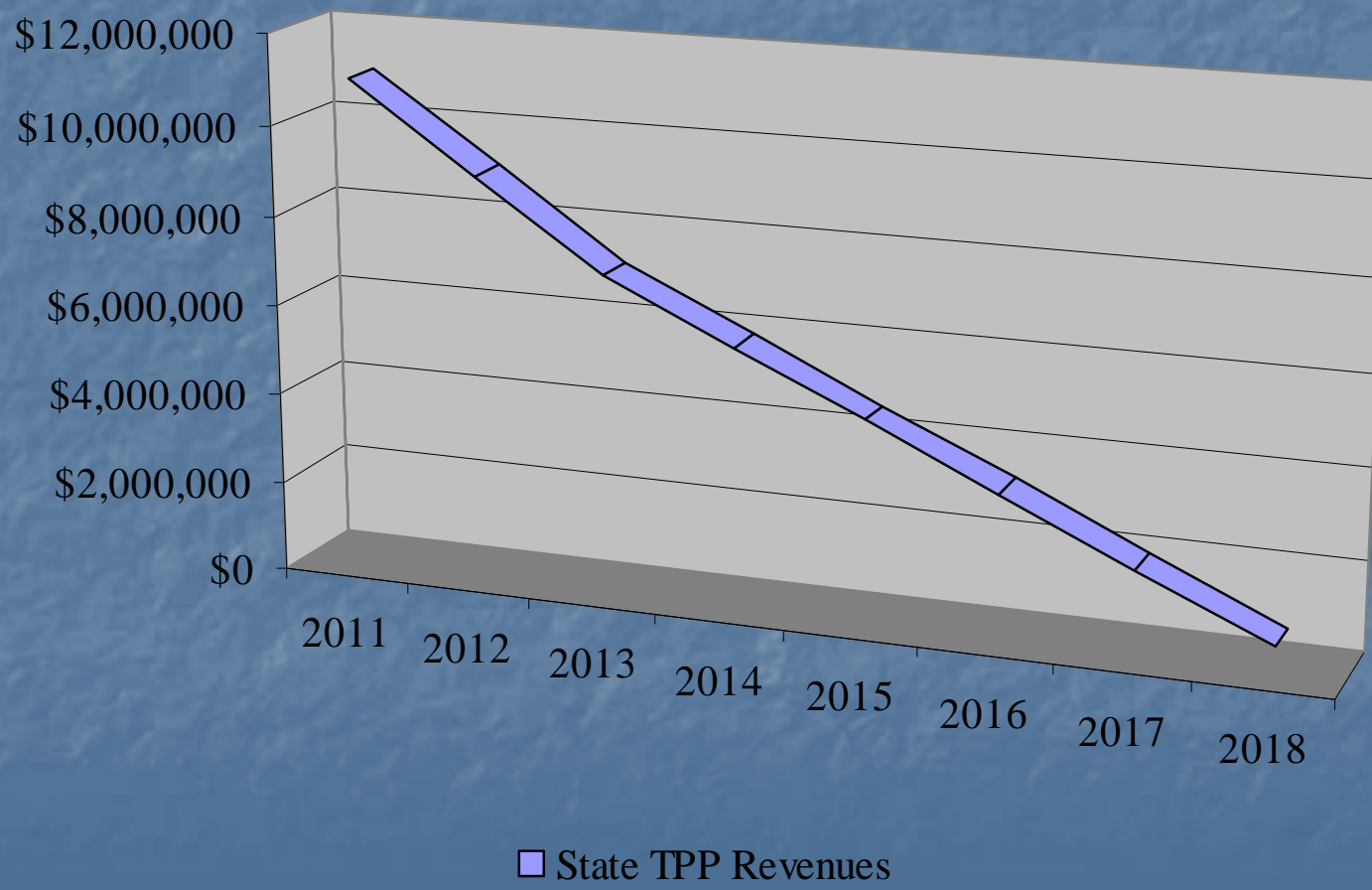
Valuation Trend Analysis (History)



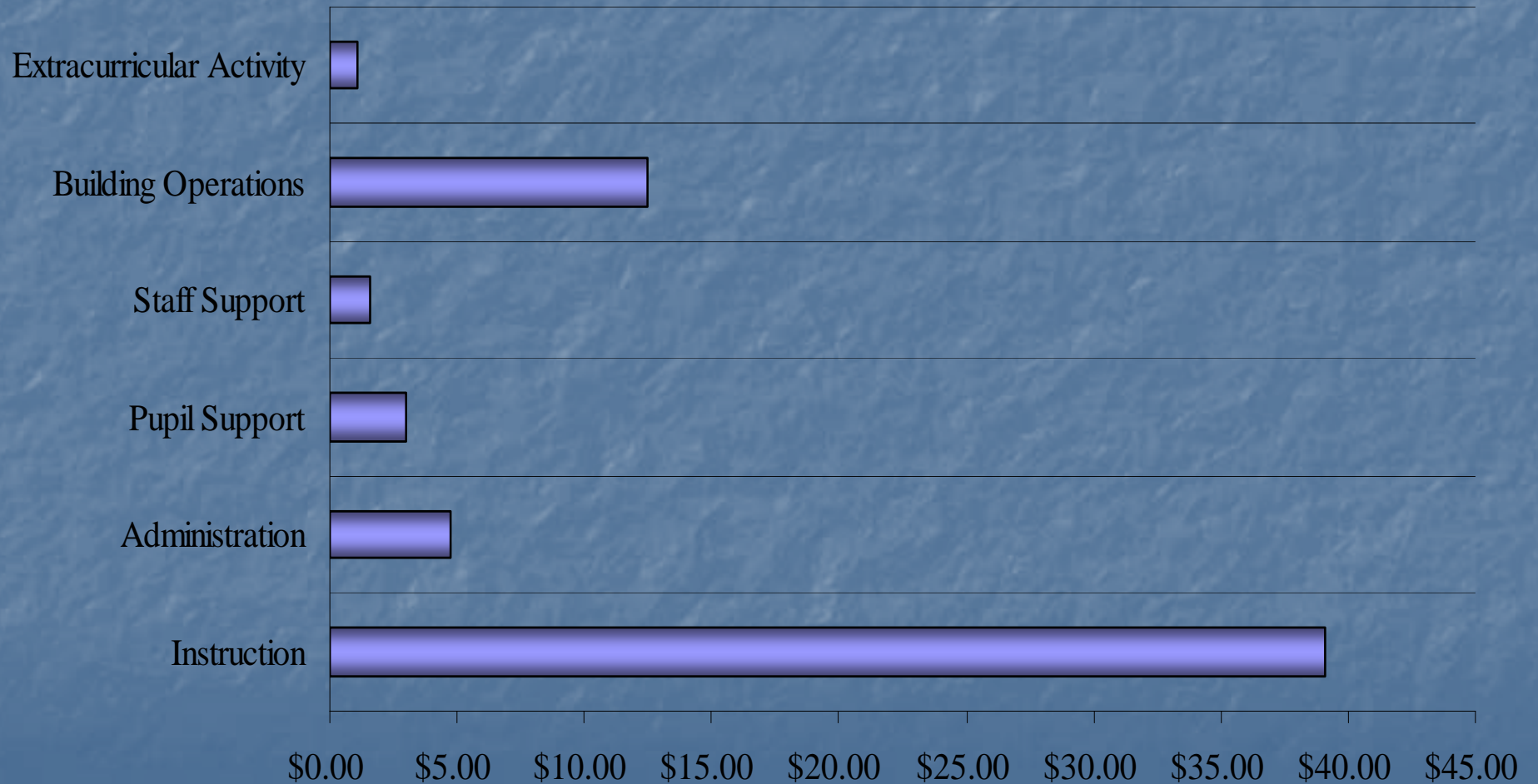
6.9 Mill Revenue Impact



State Tangible Personal Property Phase-Out



Daily Expense Per Pupil - \$61.98



#2

Unfunded Mandates:
The Impact of the
Governor's Education
Reform Proposal

20 Additional School Days

- \$43.70 (\$61.98 – fixed costs) per student
X 5,307 X 20 equals approximately
\$4,638,318 of new costs.
- Who will pay?
- What research shows the value of the additional days?

All-Day Kindergarten

- The state requires only a half-day kindergarten program.
- Solon currently has an all-day kindergarten option. Parents pay \$1,900 per year for the additional half day.
- The additional cost to the Board of Education for a mandated full-day program would be \$619,400.
- Who would pay?

Longer School Day

- Employees would work additional hours each day.
- This would result in increased personnel costs.
- Who would pay?

Smaller Class Sizes

- The plan calls for reduced class sizes in grades K-3.
- Reduces student to teacher ratio to 15-1.
- ODE's own research does not support that reduced class size translates into improved student achievement.
- This change would cost Solon \$4 million per year.

Tenure/Dismissal

- The Governor's plan would increase the observation time for tenure from three years to six.
- The plan also would ease legal restrictions on the firing of teachers who fail to meet standards.
- Overall this proposal moves in the right direction.

Change in the Charge-off from 23 to 20 Mills

- The benefit to Solon would be approximately \$3 million per year when fully implemented.
- Deals with the “phantom revenue” problem.
- The change would occur over six years.

Ten Year Phase-In

- There would be no changes during the 2009-2010 school year.
- Changes begin in 2010-2011 and continue incrementally over the next nine years.
- Phase-in exists because of lack of support and revenue to enact the changes immediately.

#3

Residency Issues:
The District's
Investigation &
Enforcement Program
Works

Board Policy 5111

Eligibility of Resident/Non-Resident Students

- The Board must provide tuition-free education for children who are at least 5 but under 22 whose parents reside in the District.
- The Board must also provide free education to other students who are eligible under Federal and/or State law and Board policies, including disabled preschool children who are at least 3 years of age but are not yet school age and are not yet enrolled in kindergarten.

Policy 5111

- The Board must also provide free education to children whose grandparents reside in the District if the grandparents have power of attorney or a caretaker affidavit.
- The grandparent is considered the parent of the student.

Policy 5111

- Other Non-Resident Eligibility Exceptions include:
 - In progress home construction
 - Custody agreements
 - Homeless students

Residency Checks

- Approximately 400 in-person checks per year for every enrolled kindergarten student and all new families to Solon & Glenwillow.
- Two families withdrew children due to our residency checking. The students were legitimate residents when they enrolled but had subsequently moved out of the District.

Residency Checks

- Additional 10-15 checks on all reported cases throughout the year. These resulted in approximately another 10-15 checks.
- Yearly monitoring with Liberty Hill, Park East and Aurora Road apartment complexes to verify valid leases exist for our students.

Tightening Documentation Requirements

- New this year for centralized kindergarten registration – required of all enrolled students.
- Changed enrollment forms, limiting the types of residency verification documents we accept.
- Residency issues are not related to initial paperwork. Families we identify have been valid residents when they enrolled but then their circumstances changed (moved, custody changes, grandparent laws, divorce, etc.)

#4

Model of Best Practice:
Ohio Department of
Education
Diagnostic Review

ODE Diagnostic Review

- Team of skilled reviewers from the ODE's Office of Educational Reform.
- The team typically visits districts designated as "High Support" by ODE because of their failure to meet Adequate Yearly Progress benchmarks.
- ODE came to Solon to provide the team with an opportunity to review of an "Excellent" rated district for training purposes and to validate their review process and rating criteria.

ODE Diagnostic Review

- The team visited all seven Solon schools.
- Toured the buildings and observed classrooms.
- Interviewed teachers, principals and parents.
- Conducted document reviews.
- Met with district administrators and board members.

ODE Diagnostic Review

- The team looked for observable behaviors and practices that reflect scientifically based research practices and alignment to Ohio Educational Standards and Guidelines.
- Also looked for district and building systems and policies that address the following areas critical to effective instruction:

ODE Diagnostic Review

- Alignment with state standards
- Instructional practices
- Environment/climate
- System of leadership
- Professional development
- Data-driven decisions.

ODE Diagnostic Review

- The diagnostic review is not an evaluation.
- The exercise will provide useful information from external experts about our district practices based on qualitative data as well as an analysis of positive practices and opportunities for improvement.
- An honor for us to be selected.

#5

Results:
Student Achievement
Increases & Excellence
Continues

Top State Report Card

- Highest designation on State of Ohio Report Card – Excellence with Distinction.
- Ohio's #1 or #2 ranked school district every year based on Performance Index Score, a weighted measure of student achievement.

U.S. Blue Ribbon Schools

- Solon High School
- Parkside Elementary School
- Lewis Elementary School
- Arthur Road Elementary School

U.S. Middle Schools to Watch

- Solon Middle School
- Orchard Middle School

State Schools of Distinction

- Solon High School
- Solon Middle School
- Orchard Middle School
- Arthur Road Elementary School
- Lewis Elementary School
- Parkside Elementary School
- Roxbury Elementary School

ACT Red Quill Award

- Solon High School is one of only two Ohio schools and 18 in the Midwest to win this prestigious honor for 2008-09.
- One of only three schools in the Midwest to win the award in back-to-back years.

Independent Endorsement

- Solon High School has been cited as one of the finest high schools in the nation by the rating criteria of:
 - Newsweek Magazine
 - U.S. News & World Report
 - Money Magazine
 - Expansion Magazine
 - Cleveland Magazine

Advanced Placement

In 2008, 602 Solon students took 1,372 AP exams.

Score of 5: 356

Score of 4: 383

Score of 3: 315

Again this year, one of the state's two top AP scholars is a Solon student.

National Merit Scholars 2009

- 14 Semi-Finalists
- 16 Commended
- 2 National Achievement Semi-Finalists

Principal's Leadership Award

- For the first time ever, a Solon High School student was selected to receive the coveted National Principal's Leadership Award. Only 100 students receive this award annually.
- Sloan Zimmerman is the award recipient. She will continue her studies at Harvard in the fall.

Presidential Scholars

- Another Solon first – two SHS students were named as Presidential Scholar Candidates for 2009.
- Kathy Qian named a U.S. Presidential Scholar, the 5th Solon student to receive the nation's top student honor. Kathy will continue her studies at the University of Pennsylvania.
- 1990, 1995, 2003, 2007, 2009

Solon's Academic Teams

- Academic Challenge: 2 two High School teams to Nationals this year.
- Future Problem Solvers: Orchard, Middle School and High School teams on to International Competition this year.
- Science Olympiad: Solon High School team earned 3rd place at the state tournament.
- AND...

Repeat National Champions

- ... after winning the state title earlier this month, the Solon Middle School Science Olympiad team returned to Solon yesterday as repeat National Champions.
- The second place team was 105 points behind.

Into the future...

- On June 4, another 440 Solon students will walk across the stage at the State Theater having met the requirements and academic standards for graduation.