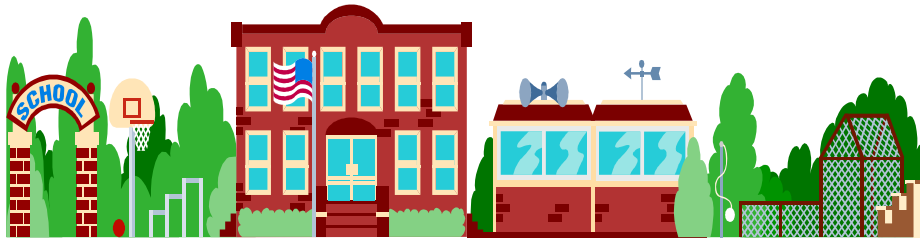


Arthur Road Elementary

Lewis Elementary



ORCHARD MIDDLE SCHOOL



Our Mission

By inspiring students to achieve their personal best, the Solon City Schools will ensure all students attain the knowledge and skills necessary to succeed and become contributing, ethical citizens through a collaborative learning community working in partnership with families and our diverse community.



Parkside Elementary



Roxbury Elementary

ORCHARD MIDDLE SCHOOL

Orchard is a team-based middle school. Our program is designed to recognize the uniqueness of the growth stage spanning the transition from childhood to adolescence. The purpose of our curriculum is to help students meet our rigorous academic content standards, as well as, help students develop responsibility, citizenship skills, and initiate a positive self image for themselves.

ORCHARD EXPECTATIONS

- Be Prompt
- Be Polite
- Be Prepared
- Be Productive

The Orchard School Pledge

I BELIEVE THAT I CAN BE A GOOD STUDENT.

I BELIEVE THAT I CAN ACHIEVE.

I BELIEVE THAT IF I WORK HARD I WILL SUCCEED; THEREFORE I WILL WORK HARD EACH DAY TO DO MY BEST.

I CAN LEARN!

I **WILL** LEARN!

It is our hope that each student's experience will be pleasant and challenging. The kind of school we have depends on each of us – students, parents and staff - working together to ensure a successful Orchard Middle School experience.

Orchard Teams

When students begin fifth grade, they join a class of 25 -27 students from Arthur Road, Lewis, Parkside and Roxbury. Homeroom classes are grouped into teams consisting of 2 or 3 homerooms. The students' homeroom teacher provides their instruction in language arts (reading, writing and word study) and at least one of the core content subjects – science, social studies and math. The other team members provide instruction for the remaining subject areas. This format enables each student to benefit from the content-specific expertise of each team teacher.

Our team model allows students to best meet the demands, rigor and specificity of the Ohio Academic Content Standards. These curriculum standards clearly outline the information that all children should know and be able to do in the content areas by the completion of each grade level. Teachers are required to collaborate and become experts in the standards and teaching strategies for their content area. This format fosters greater consistency in student learning within teams and across the grade level due to the increased opportunities for teacher collaboration.

To view the academic content standards for each content area, visit the Solon City Schools website at www.solonschools.org

Orchard School Day

The morning bell rings at 8:45 a.m. each day. Student are considered tardy at this time. Because the Orchard school day begins later than the elementary school day, Orchard students are able to take advantage of many before-school intramural activities from 7:30 a.m. to 8:30 a.m. These fun and educational offerings range from sports like deck tennis, basketball and cross-country skiing to more academic programs such as robotics, chess club and the Math 24 Challenge. The Intramural Program is only available on

Mondays, Wednesdays, and Fridays. Students taking the bus to school typically arrive between 8:30 a.m. and 8:40 a.m.

Each day begins with our video announcements in each classroom. Students in each team are provided an opportunity to be on TV as our television broadcasters!

Each day ends with an activity period which begins at 2:50pm. At this time, students may receive additional help from their teachers; work on classroom or homework assignments; or participate in Orchard's band, orchestra and choral groups. Dismissal at the end of the school day is 3:35 p.m.

Intramurals

Before-school intramurals are offered throughout the year. Participation is free and students need not register. They may attend as many or few sessions as they like. Intramurals run from 7:30 a.m. to 8:30 a.m. Parents are responsible for getting their children to school for intramurals on time. Arrivals after 7:45 a.m. cannot be guaranteed participation. Be Prompt!!

Specials

Students will attend classes each week in the areas of art, physical education and music. Specials will be taken on a three-day rotation. A calendar will be provided to students at the beginning of the school year to help them know when they have each special. Orchard students each receive a gym locker and are required to wear gym uniforms for their physical education classes. These two-piece shorts and t-shirt uniforms are available at local sporting goods stores or through the Spirit Store at Solon High School.

Lunch and Recess

Students are provided lunch and recess each day. The lunch and recess periods are divided by grade levels, so fifth graders are able to eat, socialize and play with fifth graders on other teams during the school day. They are also able to interact with students on other teams during band, orchestra and chorus, as well as during intramurals and extracurricular activities.

Similar to the elementary schools, the Orchard Recess Program runs on the 4 zone model. The purpose of this program is to get all students involved and active during the recess period. Students are expected to choose one of the four activity zones which are facilitated by the monitors and students are expected to follow their directions and meet the Orchard Expectations at all times.

Our cafeteria utilizes the Café Terminal computerized point of sale system. This system eliminates meal tickets, monitor purchases, and provides total confidentiality for all students. Students use their 6-digit student ID number to enter onto the computer pin-pad in the cafeteria. As the account is accessed the student's name and photo, account status, and any food allergies will appear on the screen to prevent fraudulent use. This system tracks the student's purchases and provides notification when the student's account reaches below \$5.

Café Terminal is designed to be a "cash-less" system. We encourage all students to participate and pre-pay with cash and checks that may be sent to school with your student. Please make sure the student's name and homeroom teacher are noted on the envelope with your payment. Parents may also add money to the account via Credit Card and Direct Withdrawal. Detailed information will be sent home with students at the beginning of each year.

The Activity Period

At 2:50 p.m. each day, students participate in what is known as the Activity Period, or 2:50 period. At this time, students may receive additional help from their teachers; work

on classroom or homework assignments; or participate in Orchard's band, orchestra and choral groups. All students are encouraged to participate in at least one of the music programs. (See Music Education Brochure.)

ARRIVAL AND DISMISSAL – STUDENT DROP OFF / PICK UP

Students can ONLY be dropped off or picked up behind the school along the curb by the playground. Access to this area is available via Cramer Drive on SOM Center Road (across from the entrance to SMS). A painted lane with arrows is provided to guide cars through the lot in a safe and orderly manner. Drop off and Pick up is NOT permitted in the main parking lot. Buses use that lot to load and unload students.

DISCIPLINE AND STUDENT BEHAVIOR

In order to provide the best environment for learning the Orchard faculty and staff insists on certain standards of conduct and behavior from our students. We are not only concerned with the students' academic growth, but also with their development of self-discipline and self-direction. The design of the Orchard School experience is to contribute to the development of capable individuals possessing the necessary abilities to participate and contribute in a diverse, changing society.

Therefore we expect certain behaviors to be displayed by the students. Among those behaviors we expect students to:

- Be Prompt
- Be Polite
- Be Prepared
- Be Productive

A detailed code of conduct is included as part of the agenda book that each student receives at the start of the school year. All students benefit from a Welcome Assembly with the Assistant Principal and Guidance Counselor during the first week of school to review expectations.

GUIDANCE

The Guidance Department personnel are available to help and talk with students and parents about any school problem or situation. They are available to help make the school year successful. Appointment slips are available to students in the office to schedule meetings. Permission is needed from the teacher to attend any scheduled appointment.

Guidance counselors facilitate monthly guidance lessons which assist students in making good choices. These lessons focus on academic, behavioral and social responsibilities. Students in fifth grade participate in the CASS intervention and program. Students in sixth grade participate in the Health on Wheels – Maturation presentation and discussions.

CASS

CASS, or Creating a Safe Social Climate in Our Schools, is an intervention and prevention program designed to reduce peer aggression, especially covert or undercover aggression, among students. Using mentors from Solon High School, along with specially trained adult facilitators, the program provides ongoing support to help students learn to treat one another with dignity and respect in classrooms, in hallways, on the playground, in the lunch room, on the bus and at home. All students in the fifth grade will participate in the program. Throughout the year, educational information will also be disseminated to parents detailing how to recognize forms of peer aggression, particularly those that are subtle or undercover, and how to address them.

Homework

The Solon Board of Education believes that homework properly designed, carefully planned and geared to the development of the individual student has an important place in the educational process. Homework will be assigned on a regular basis to help the student become more self-reliant, learn to work independently, improve the skills that have been taught and complete certain projects such as the reading of worthwhile books and the preparation of research papers. Home study assignments also afford a way for parents to acquaint themselves with the school program and their own child's educational process.

Homework will not be used for disciplinary purposes. The amount and type of homework given is to be decided by the classroom teachers, within the framework of their overall instructional plans.

Lockers

Each student will be assigned a locker for storage of coats and other belongings. Two students may share a locker. The student's homeroom teacher will make assignments.

Please keep lockers neat and orderly. Do not post any pictures inside or outside. All hallway lockers have built-in locks. Combinations and ID numbers are provided, recorded and maintained by the Orchard Office. Students are urged to keep books, pencils, paper, etc in their desk in the classroom area.

The Physical Education Department assigns gym lockers. These lockers must have an authorized lock. Combinations will be recorded and maintained by the Orchard PE Staff.

Lockers are the Property of the Solon City Schools and may be entered by the building administration with suspicion of violation of our Code of Conduct.

School Dress

Appearance is an important factor in making and keeping friends. Our reputation is gained by our appearance and the effect our actions have on others. Proper dress and good grooming are important not only because of the impression made upon others but because of the effect dress has upon our attitude and actions.

Students are expected to dress appropriately for school activities. Clothing that creates a distraction or safety issue is not permitted. Types of clothing *NOT* allowed include:

- 1) Shorts, skirts, and dresses that are too tight or too short (mid-thigh is appropriate)
- 2) Tops with low necklines or bare midriffs
- 3) Thong sandals, flip flops, or shower shoes
- 4) Pajama/lounge pants
- 5) Clothes with holes or unfinished edges
- 6) Oversized or ripped jeans
- 7) Any clothing that advertises alcohol, tobacco, other drugs, or sexual phrases
- 8) Coats and hats in class
- 9) Tank tops, tops with spaghetti straps
- 10) Chains and spiked jewelry
- 11) Shoes with wheels

Cell Phones

Use of Cell phones during the school day or on school buses is prohibited. Cell phones must be turned off and out of sight. The use of any recording devices, including camera phones, without staff permission is a violation of the school conduct code.

Parent-Teacher Communication

The parent-teacher partnership is the most significant relationship that can be established for children. Teachers and parents are expected to communicate regularly regarding all school issues. Students will receive a report card at the conclusion of each nine-week grading period. Additionally, teachers provide interim reports to parents and students to gauge students' progress mid-way through the grading periods. Orchard teachers use the Family Information System at www.solonschools.org to provide details about class assignments, announcements and class news. Phone, e-mail and face-to-face contact with your child's teachers is also encouraged any time you have a concern or information regarding your son or daughter that you believe could be affecting their performance in the classroom. All Orchard teachers can be reached using the district voice mail system at 349-7757. Classroom telephones are operational after school hours.

Parent Teacher Association

The Orchard PTA is a very supportive and active group of parents. General PTA meetings are held the first Tuesday of the month at 9:15 AM at the school. They are an essential part of our school program and parent membership and participation is strongly encouraged.

Sixth Grade Opportunities

D.A.R.E. Program

D.A.R.E. stands for Drug Abuse Resistance Education. We are grateful to the City of Solon for funding the D.A.R.E. Program at Orchard School. The curriculum utilizes a psychological approach that is designed to equip students with the necessary skills to recognize and resist pressures to experiment with substances.

Outdoor Education

The Outdoor Education Program is required of all sixth graders toward the end of May. Students and staff spend three days and two nights in a true adventure of learning with nature. Please remember, student participation in this activity is dependent upon student behavior throughout the school year.

Middle School Children

Following are some of the characteristics that are common to adolescents. These characteristics set middle school children apart and make them a completely unique age group of fascinating individuals.



PHYSICAL TRAITS

Lack of muscular coordination
Poor posture
Fatigue, restlessness
Feelings of physical/emotional discomfort
Limited endurance
Very short attention span



SOCIAL TRAITS

Intense need for peer acceptance
Searching for independence
Aggressiveness/boisterousness



EMOTIONAL TRAITS

Mood swings
Poor self concept
Sex role conflicts
Negative feelings
Feelings of anxiety, conflict and insecurity



INTELLECTUAL TRAITS

Academics fall by wayside
Grades often slip
Changing interests

Recognizing and accepting the above traits as “normal” developmental traits of the middle school child can be very beneficial in helping adults understand and deal with them. Setting limits for the middle school child is very important, but there should be latitude within the limits that will enable the trans-adolescent to have the freedom to make choices and decisions within the parameters of the limits. Once these traits are recognized, understood and accepted, the adult can assume a supportive role in dealing with the unique individual known as a middle school child.

**People Who Can Help You and Your Child
“Every Child...Every Day...Whatever it Takes”**

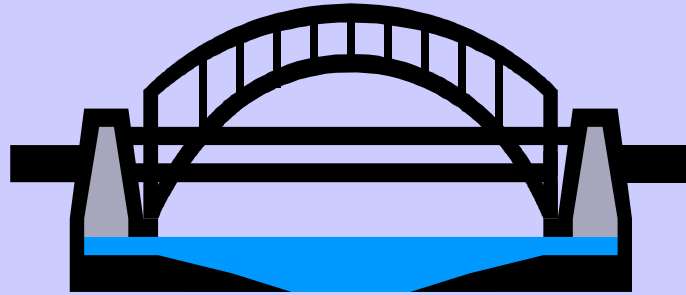
Orchard Middle School

349-6215

Principal:	Michael Acomb
Assistant Principal:	Felecia Bell
Guidance Counselors:	Nicole Westendorf Mike Sullivan
Main Office Staff:	Kelly Uterhark Linda Cassaro Tracy Rondini
Psychologist:	Eden Meihls

Elementary School

ORCHARD SCHOOL



Middle School