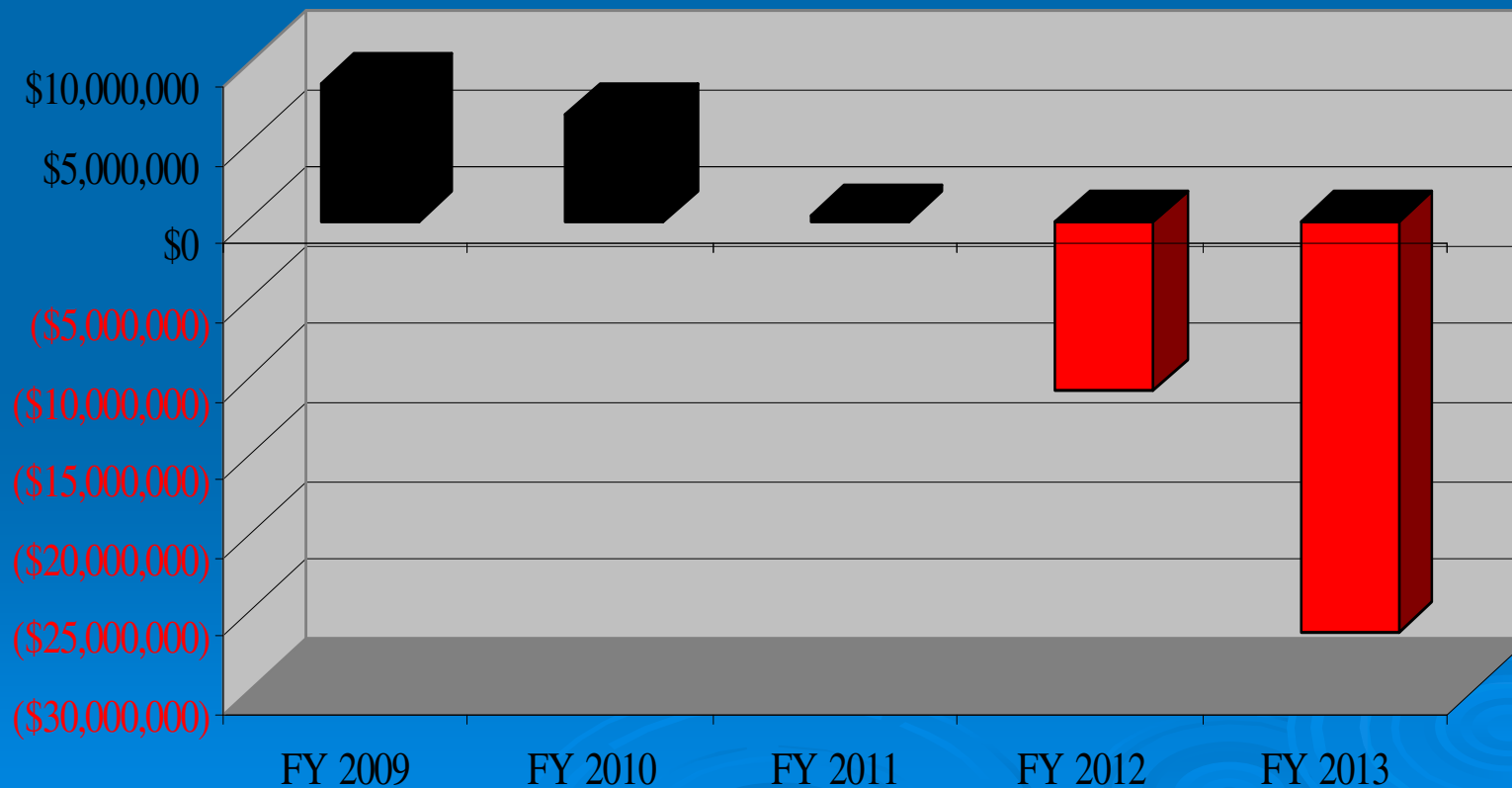


Solon City Schools Five Year Forecast Financial Review

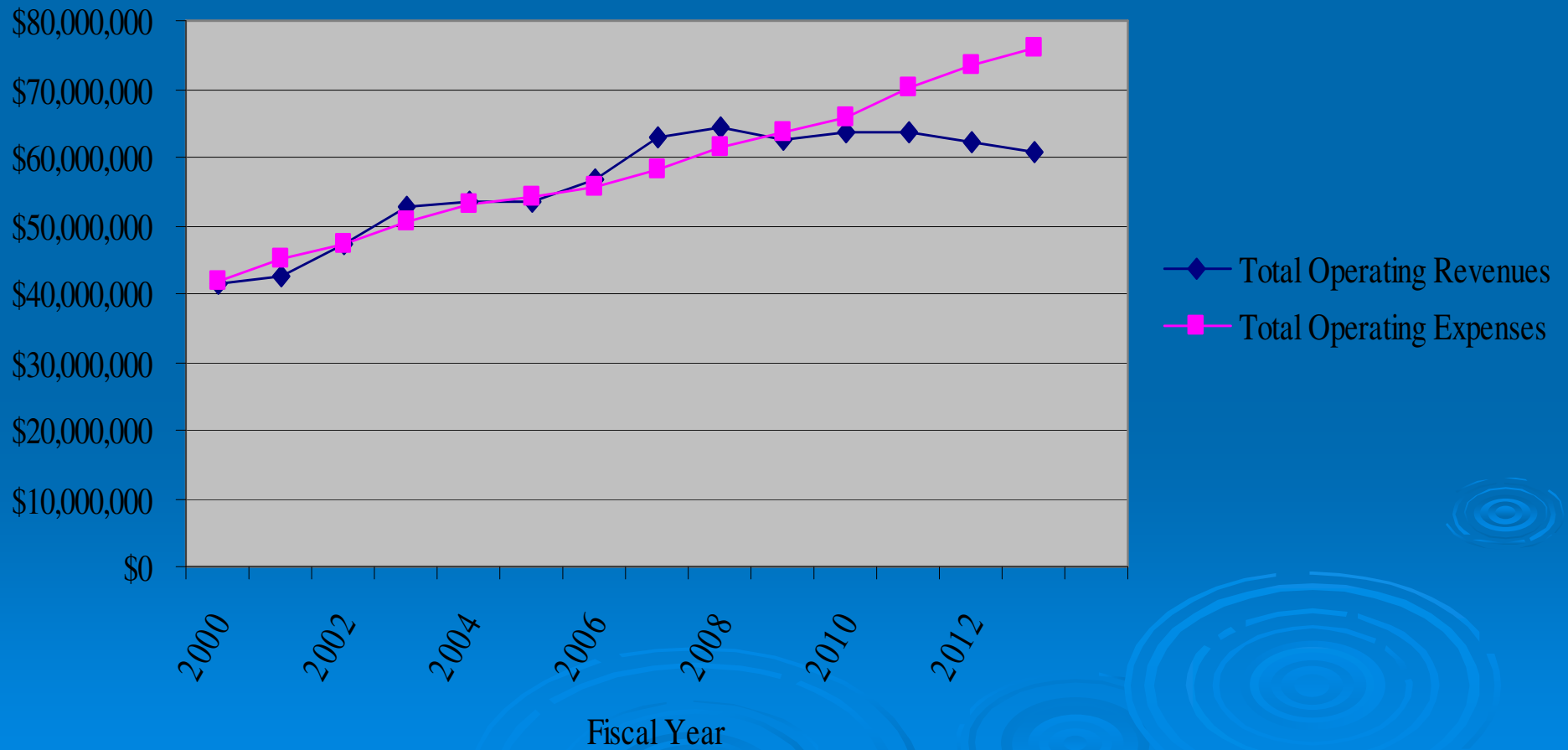
May 18, 2009



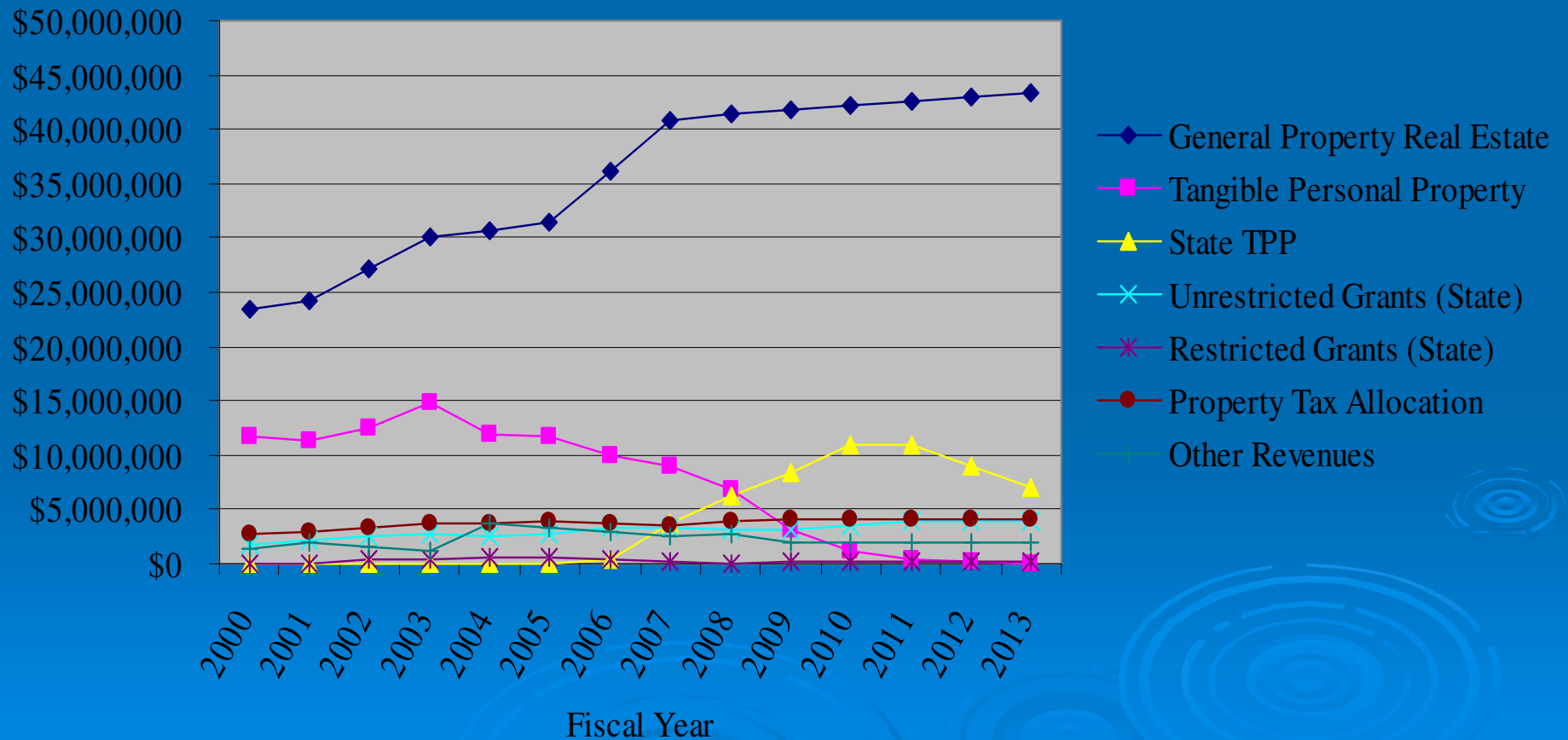
Projected Ending Fund Balance



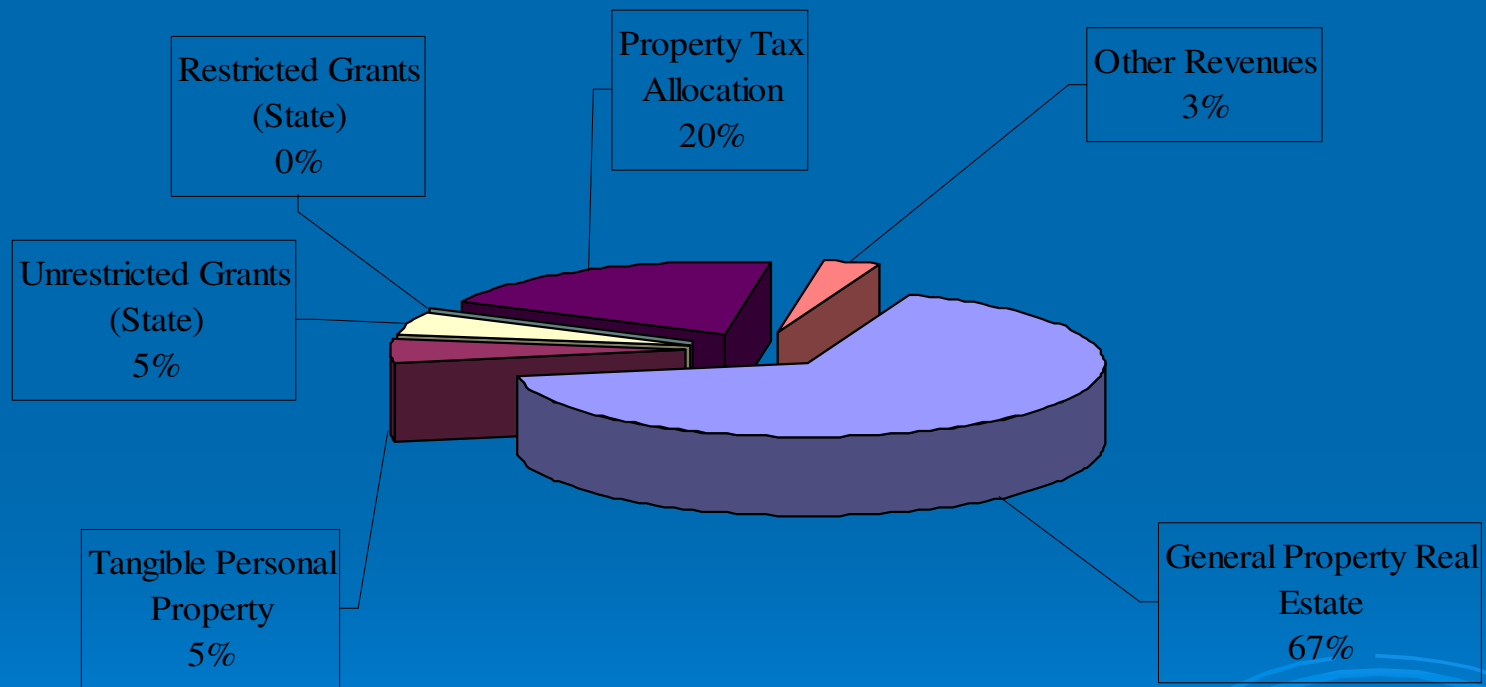
Operating Revenues and Expenditures (History and Projected)



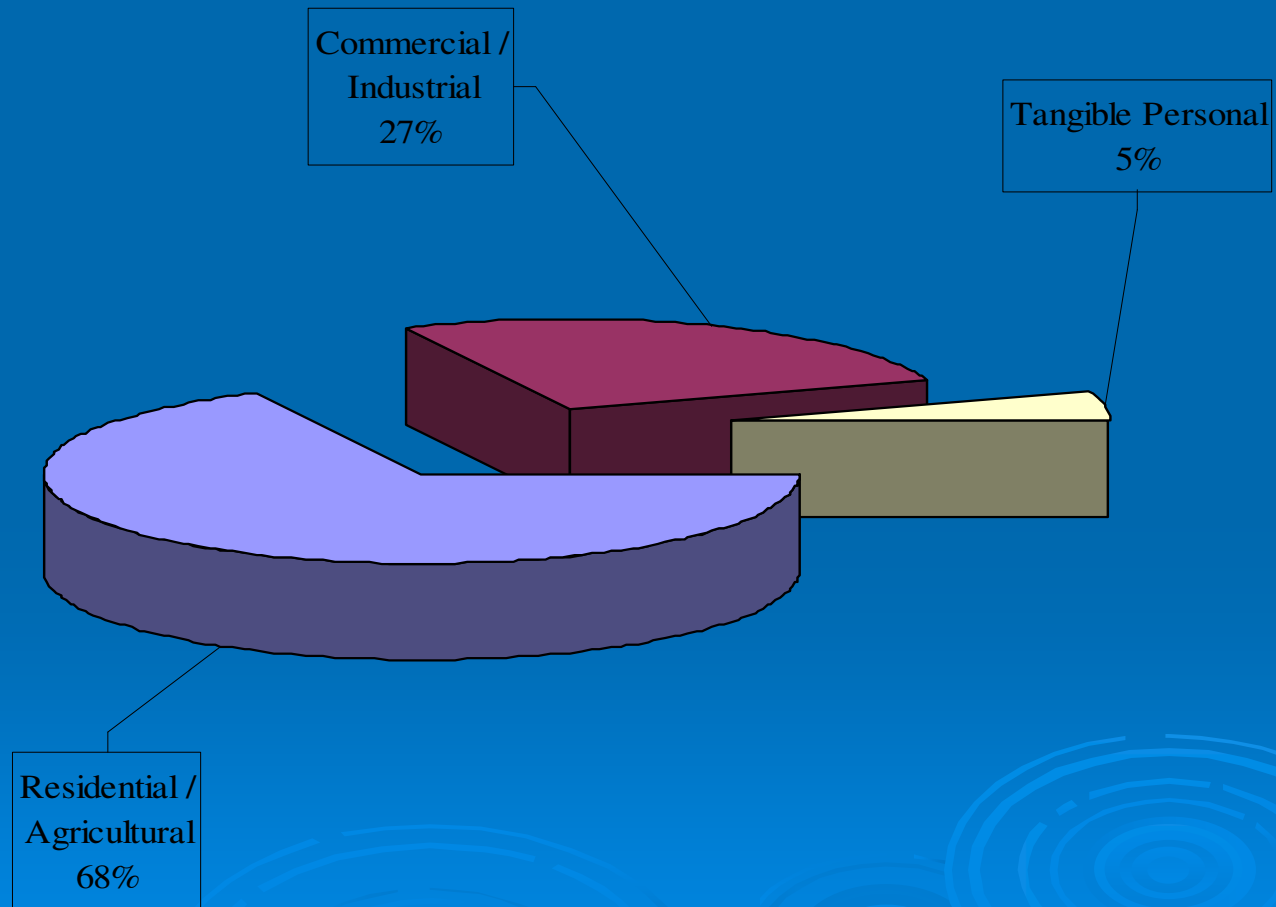
Revenue Categories (History and Projected)



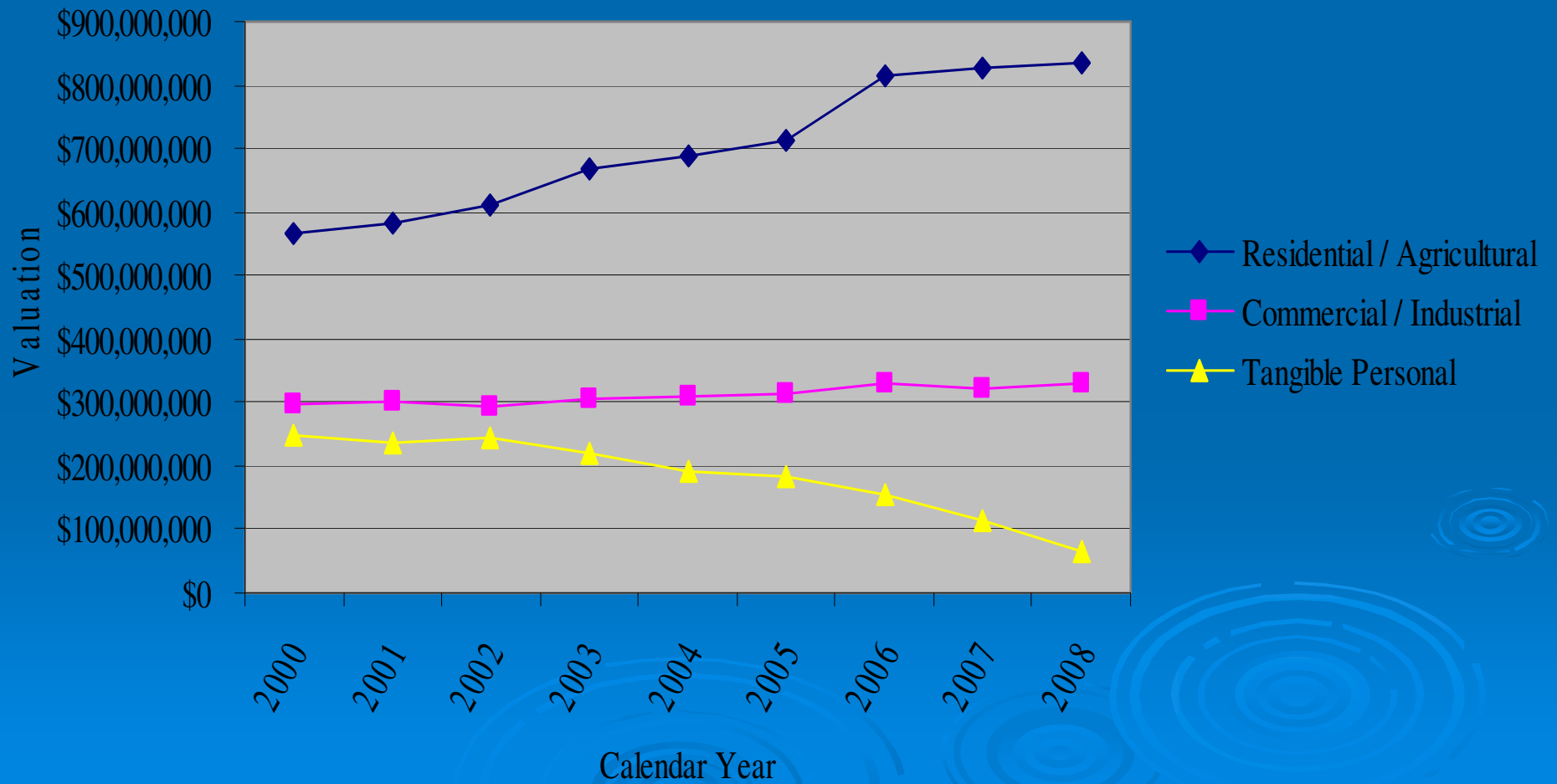
Source of Revenue



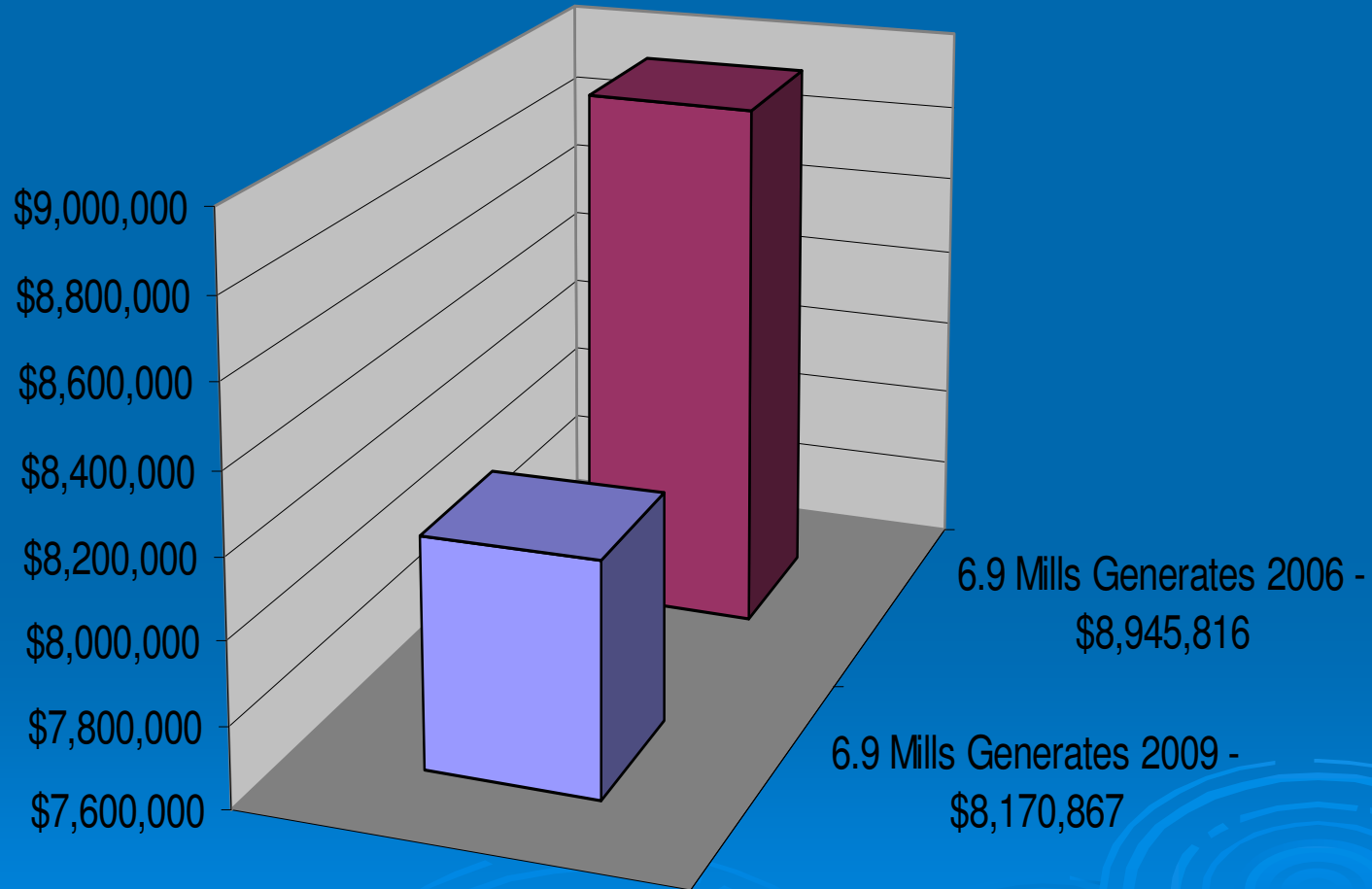
Valuation Breakdown By Property Classification



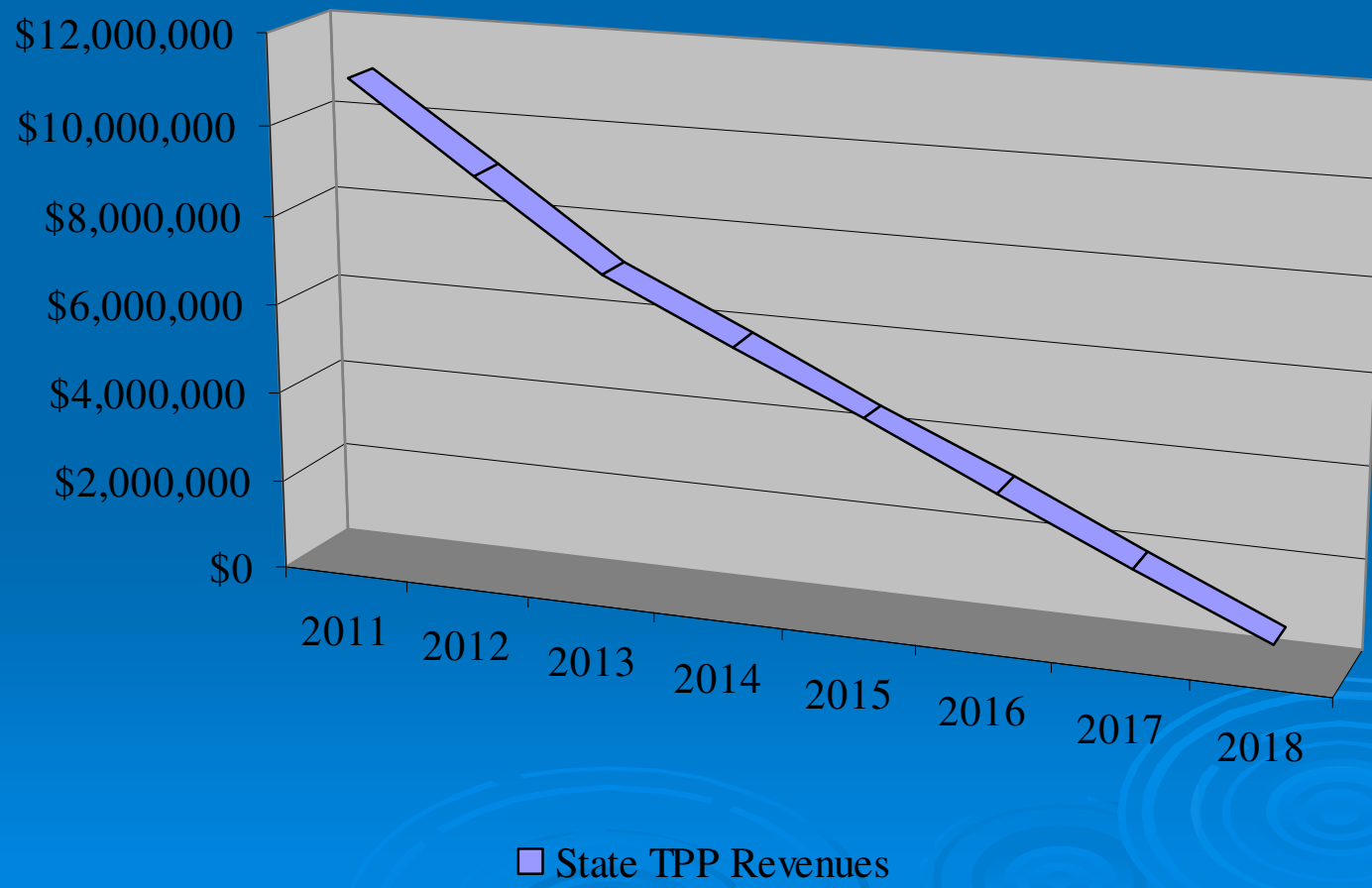
Valuation Trend Analysis (History)



6.9 Mill Revenue Impact



State Tangible Personal Property Phase-Out



Daily Expense Per Pupil - \$61.98

